

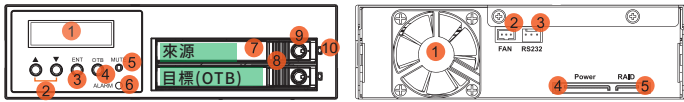
# RAIDON

## iR2024T 快速安裝導引

### 產品示意圖與配件表

前視圖

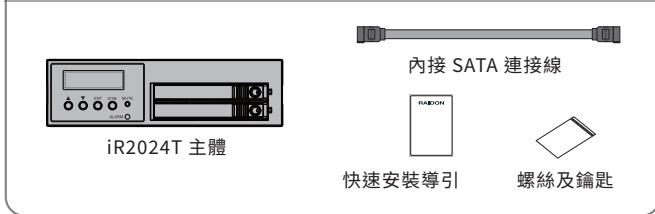
背視圖



- |                 |               |                     |
|-----------------|---------------|---------------------|
| 1. 液晶顯示面板       | 6. 電源 / 故障顯示燈 | 1. 風扇               |
| 2. 選擇鍵(UP/DOWN) | 7. 硬碟抽取盒把手    | 2. 風扇連接埠            |
| 3. 確認鍵(Enter)   | 8. 頂出按鍵       | 3. RS232 連接埠        |
| 4. 備份鍵(OTB)     | 9. 硬碟抽取盒鎖     | 4. SATA 15Pin 電源輸入埠 |
| 5. 靜音按鍵(MUTE)   | 10. 硬碟讀寫燈     | 5. SATA 7Pin 資料連接埠  |

打開包裝外盒後，包裝內容應包含下列組件：

#### 產品配件表



- 請先確認相關配件與產品本身是否有受損或是缺少配件，若有任何疑問，請與您的經銷商或業務人員聯絡。
- 請前往官網 ([www.raidon.com.tw](http://www.raidon.com.tw)) 下載說明書、驅動程式以及其餘相關資源。



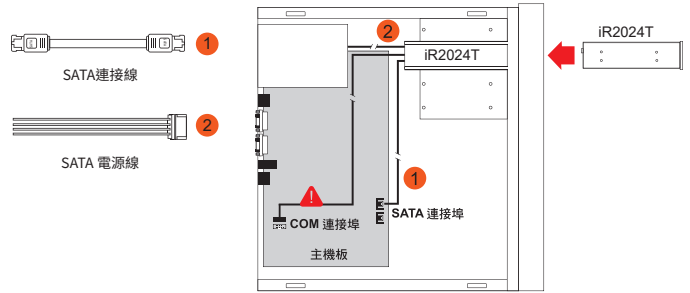
V0.1(Oct. 2023)

1

### 硬體安裝

請參照以下步驟完成硬體安裝：

- 請使用零件包內附的鑰匙解鎖硬碟抽取盒鎖，將頂出按鍵向右推移，硬碟抽取盒把手會彈開，即可取出抽取盒。
- 安裝 2.5 吋硬碟，請使用 4 顆零件包內附的小顆螺絲加以固定。
- 硬碟安裝完成後請將抽取盒平移放入主機內並關上把手。
- 將產品安裝於電腦機殼上的 CD-ROM 位置，並使用配件包裡的螺絲固定，並連接 SATA 連接線與 SATA 電源線。



內接主機殼示意圖

- 硬體安裝完成。一旦開啟電腦，您的作業系統會自動辨識所裝置好的硬碟。如果您的硬碟是必須被格式化的，請依照電腦的作業系統進行硬碟格式化步驟。當完成硬碟格式化後，硬碟便可以進行資料讀寫。

2

### 燈號說明

狀態	Disk1 指示燈	Disk2 指示燈 (OTB)	電源 / 故障顯示燈	蜂鳴器
待機	藍燈恆亮	紅燈恆亮	藍燈恆亮	N/A
資料存取	紫燈閃爍	紅燈恆亮	藍燈恆亮	N/A
Rebuilding-Disk1	藍燈恆亮	---	藍燈恆亮	N/A
Rebuilding-Disk2 (OTB)	---	紅燈閃爍	藍燈恆亮	N/A
風扇故障	---	---	紫燈恆亮	鳴叫
溫度過高	---	---	紫燈恆亮	鳴叫

註：此為OTB產品，啟動Target Driver 需要按下OTB按鍵後才會啟動。

### LCD顯示的各種訊息

#### 1. 第一次開機狀態

RAID-1 degraded  
Pri : O Sec : M

#### 2. 啟動OBT

Pri HDD : OK  
Sec HDD : INSERT

Pri HDD : OK  
Sec HDD : OK

#### 3. 資料重建

Rebuilding  
Pri → Sec 00%

#### 4. 重建完成

Pri HDD : OK  
Sec HDD : OK

#### 5. 硬碟損毀

RAID-1 degraded  
Pri : O Sec : M

RAID-1 degraded  
Pri : M Sec : O

#### 6. 溫度過高 (≥50 °C)

Pri HDD : OK  
Sec HDD : OK T

#### 7. 風扇故障

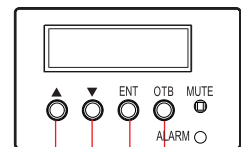
Pri HDD : OK F  
Sec HDD : OK



- 當「T」出現時，是代表系統過熱的警告，但是不至於影響正常資料傳輸，只要改善環境溫度，就可恢復正常。
- 在重建完成後，目標Driver 沒有拔出前會維持Raid 1 狀態。

3

### 前面板操作



- 開始備份
  - 跳回上一層 或是 取消
- 循序選擇項目

### 產品使用注意事項

- 電腦或伺服器具備 SATA I、SATA II 或 SATA III 介面。
- 具備 SATA I、SATA II 或 SATA III 介面的硬碟。
- 本系統允許使用不同廠牌的硬碟。但如果要獲得更好的效能，我們強烈建議使用相同廠牌型號的硬碟。
- 安裝硬碟前請先確認所使用的硬碟並無壞軌或是其他問題，以免導致系統損毀或資料遺失。
- 硬碟格式化後，iR2024T 的總使用儲存容量或許會與硬碟容量加總後的有所不同。
- 強烈建議除了使用 iR2024T 的資料儲存功能外，請針對重要資料備份到另一個儲存裝置上或遠端備份，雙重備援您重要的資料。若您儲存在 iR2024T 的資料損毀或遺失，RAIDON 將不負任何的責任。

感謝您使用 銳銜科技股份有限公司 的產品。

本手冊裡的資訊在出版前雖然已經被詳細確認，但實際產品規格將已出貨時為準；任何的產品規格或相關資訊更新，請您直接上 [www.RAIDON.com.tw](http://www.RAIDON.com.tw) 網站查詢，或直接與您的業務聯絡窗口聯繫，本公司將不另行通知。

如果您對 銳銜科技 的產品有任何疑問，或是想獲得最新產品訊息、使用手冊或韌體，請您聯絡 [supporting@raidon.com.tw](mailto:supporting@raidon.com.tw)，我們將儘速回覆您。

RAIDON 為 銳銜科技股份有限公司 旗下品牌之一  
本說明相關產品內容歸 銳銜科技股份有限公司 版權所有

4

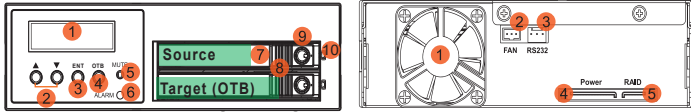
# RAIDON

## iR2024T Quick Setup Guide

### Package Contents and Product Views

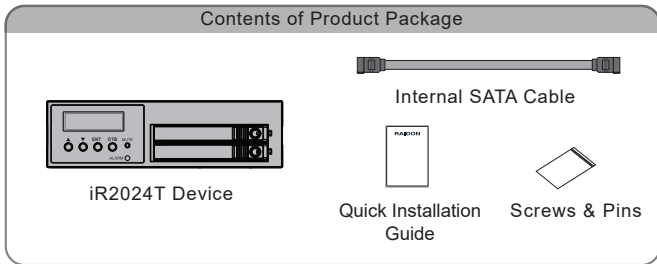
Front View

Rear View



- |                   |                            |                           |
|-------------------|----------------------------|---------------------------|
| 1. LCD Display    | 6. Power Failure Indicator | 1. Cooling Fan            |
| 2. UP/DOWN Button | 7. HDD Tray Handle         | 2. 3-pin Fan Connector    |
| 3. Enter Button   | 8. HDD Tray Ejection       | 3. RS232 Connector        |
| 4. OTB Button     | 9. HDD Tray key lock       | 4. 15-pin Power Connector |
| 5. MUTE Button    | 10. HDD Access Indicator   | 5. 7-pin SATA Connector   |

Open the package and you should find the following:



- Please check the product and accessories for any defect or missing parts. If you have any questions, please contact your product supplier.
- Please visit the official website - Download page (<https://www.raidon.com.tw>) to download drivers and other related resources.



V0.1(Oct. 2023)

1

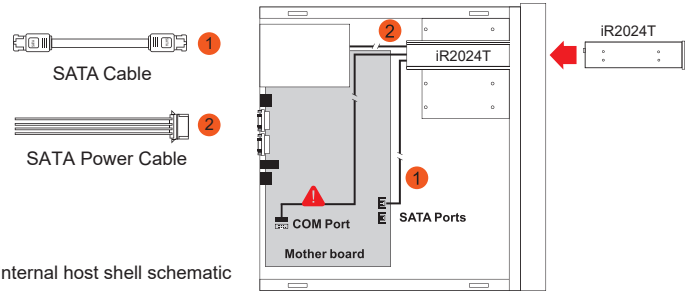
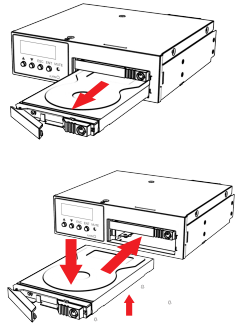
### Hardware Installation

Please install iR2024T as the following instruction.

1. After unlocking the HDD tray key lock with the key attached to the accessory, push the HDD tray ejection to the right and the removable drive tray will pop open to remove the removable tray.



2. Install the 2.5-inch hard disk and secure it with the small screws included in the 4 parts package.
3. When the hard drive installation has been completed, insert the hard drive tray into the system horizontally and secure the latch into place.
4. Install device into one of the CD-ROM bays with screws from the accessory kit. Then properly connect SATA cable and SATA power cable from your system to the device.



5. Power on your system after hardware installation is completed, and your operating system will automatically detect the hard drives from booting. Then follow the steps from your operating system to partition and format the drives when necessary, device will be ready to use once the format is completed.

2

### LED Instruction

Status	Disk1	Disk2(OTB)	System Indication	Buzzer
HDD Idle	Blue light always on	Red light always on	Blue light always on	N/A
Access	Purple light flashing	Red light always on	Blue light always on	N/A
Rebuilding-Disk1	Blue light always on	- - -	Blue light always on	N/A
Rebuilding-Disk(OTB)	- - -	Red light flashing	Blue light always on	N/A
Fan Failure	- - -	- - -	Purple light always on	ON
Temp Failure	- - -	- - -	Purple light always on	ON

Note: This is an OTB product, and you need to press the OTB button to start the Target Driver.

### Hard Disk Status on LCD Screen

1. Booting and Normal status

RAID-1 degraded  
Pri : O Sec : M

2. Start OBT

Pri HDD : OK  
Sec HDD : INSERT

Pri HDD : OK  
Sec HDD : OK

3. Rebuilding

Rebuilding  
Pri → Sec 00%

4. Rebuilding OK

Pri HDD : OK  
Sec HDD : OK

5. HDD Failure

RAID-1 degraded  
Pri : O Sec : M

RAID-1 degraded  
Pri : M Sec : O

6. Over Temperature (≥50°C)

Pri HDD : OK  
Sec HDD : OK T

7. Fan Failure

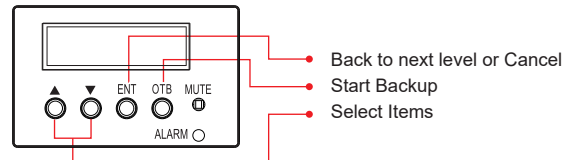
Pri HDD : OK F  
Sec HDD : OK



1. When "T" is shown, it's an alert of system over heating, but it would still work fine. And as long as the ambient temperature is improved, system shuts off the alert.
2. After the rebuild is completed, the target driver will remain in the Raid 1 state until it is unplugged.

3

### Description of Front Panel Operation



### Important Notice

1. Computers or servers must be with SATA I, SATA II, or SATA III interface.
2. Hard drive must be with SATA I, SATA II, or SATA III interface.
3. iR2024T product allows user to simultaneously use the two different hard drives from two different manufactures. However, if the user expects a better efficiency, we strongly recommend the user to use the two hard drives from the same manufacturer.
4. Please make sure that the two hard drives are free from bad blocks or defects prior to installation in order to avoid system crashes or data loss.
5. The actual storage capacity of iR2024T recognized by the system may differ from the total capacity stated on the hard drives combined once the drives have been formatted.
6. It is highly recommended for user to back up important data contained within the iR2024T unit on a regular basis or whenever the user feels necessary to a remote or a separate storage device. RAIDON will not be responsible for any lost of data caused during the use of the unit or the recovery of the data lost.

Thank you for choosing RAIDON's product.

The information provided in this manual was checked before publication, but the actual product specifications may have changed before shipping; Latest product specifications and updates can be found at [www.RAIDON.com.tw](http://www.RAIDON.com.tw) or through your sales representative. No separate notifications will be provided by our company.

If you have any questions about RAIDON products or would like to receive the latest product information, instruction manuals, or firmware, please contact [Supporting@raidon.com.tw](mailto:Supporting@raidon.com.tw) for assistance.

RAIDON is one brand under RAIDON TECHNOLOGY, INC.

All product-related content in this manual are copyrighted by RAIDON TECHNOLOGY, INC.

4